



2016

New Residents Information Kit



Kentish Council

PO Box 63 (69 High Street), SHEFFIELD TAS 7306

Phone - (03) 6491 0200

Facsimile - (03) 6491 1659

Email - council@kentish.tas.gov.au

Internet - www.kentish.tas.gov.au

Disclaimer: Kentish Council has made every endeavour to ensure that details are correct but can accept no responsibility for any inaccuracy or mis-deception contained in the publication as a result of information supplied.

Index

Mayor's Welcome.....	4
Profile of Kentish.....	5
Advertising by Council.....	6
Asbestos Removal.....	6
Banking.....	7
Building.....	7
Business Development.....	7
Camping and Caravaning.....	8
Cemeteries.....	8
Children's Services.....	9
Community Grants.....	9
Community Organisations & Sports Clubs.....	9
Council Meetings.....	10
Council Office.....	10
Council Structure.....	10
Driveway and Vehicle Crossovers.....	12
Education.....	12
Elderly Persons Units.....	13
Emergency Information.....	13
Environment.....	14
Burning Off.....	14
Back Yard Incinerators.....	15
Fence Construction.....	15
Footpaths.....	15
Garbage Collection Service.....	16
Health.....	16
Immunisation.....	17
Justices of the Peace.....	17
Museum.....	17
Parking.....	17
Parks and Reserves.....	18
Pets.....	18
Planning Permits.....	19
Plumbing Permits.....	20
Postal Services.....	20
Rates.....	20
Pensioner Rate Remission.....	20
Recycling Service.....	20
Road Reservation Works.....	21
Sharps Disposal Service.....	21
Sport and Recreation.....	22
Stormwater.....	22
Transport.....	23
Air.....	23
Road.....	23
Sea.....	23
Venue Hire.....	23

Visitor Information Centre.....	24
Waste Transfer Station.....	25
Water and Sewerage.....	26
Weeds.....	26
Check List	28
Notes.....	29

Mayor's Welcome

On behalf of Council and residents, I would like to welcome you to Kentish and congratulate you on choosing such a great place to live.

We believe our beautiful countryside, majestic mountains, quaint towns and meandering rivers offer a lifestyle that is something special that you will soon come to appreciate and enjoy.

This environment is supported by a friendly community that links to a pioneering heritage of high values and hard work.



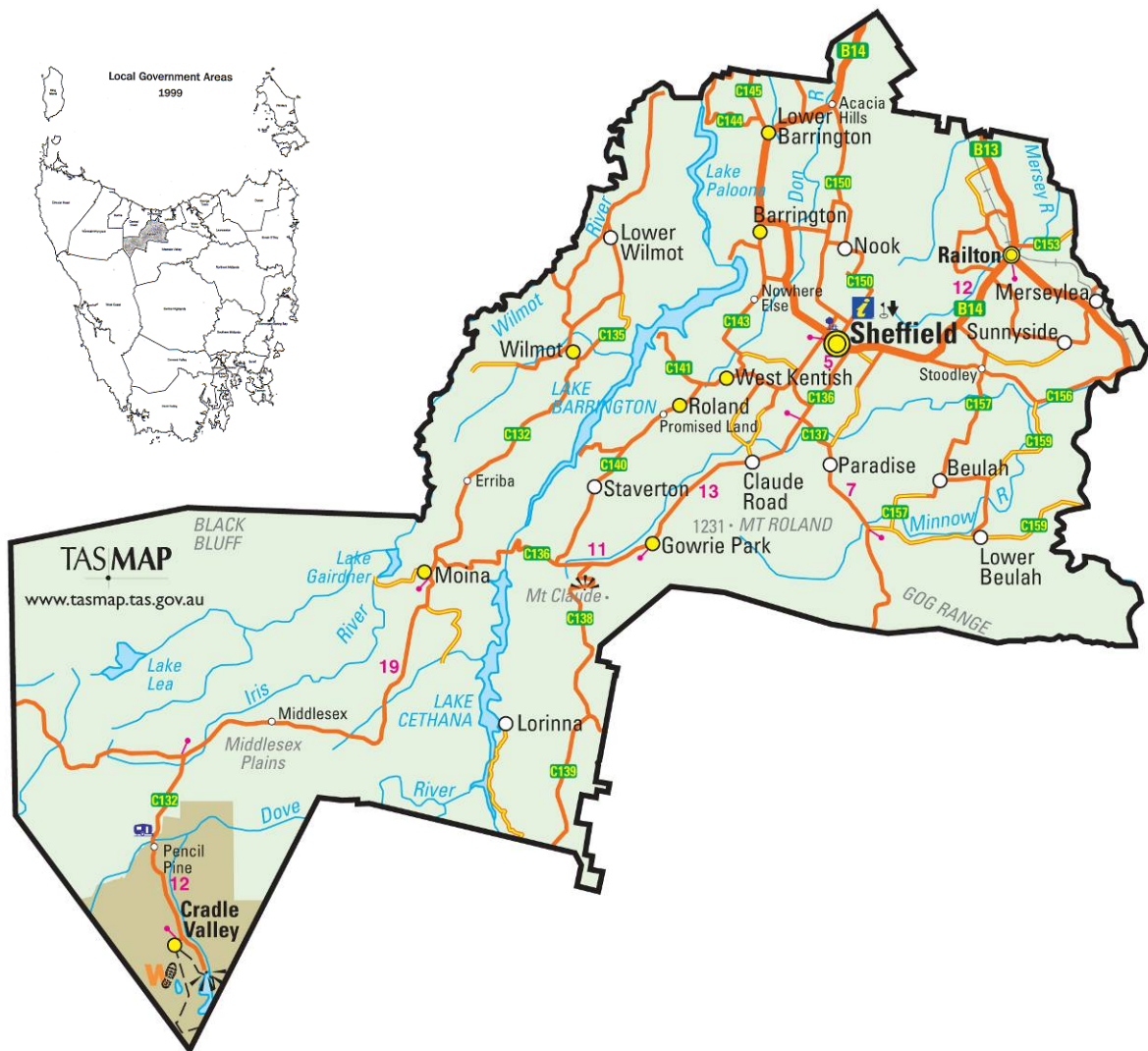
The Council, along with other local and government agencies, provides an array of services to our area. Should you require information on any of these services please feel free to contact the Council Office on 6491 0200 or visit our website at www.kentish.tas.gov.au.

Again, please accept our welcome and I trust you will enjoy your new home.

Don Thwaites
MAYOR

Profile of Kentish

Population (ABS-Estimated resident population at June 2013)	6, 495
Number of Electors	4,441
Area	1,187 sq kms
Number of Valued Properties (at June 2015)	3,616
Assessed Annual Value of Rateable Properties (at June 2015)	\$43.4m
Road Distances:	
- Sealed	279km
- Unsealed	202km
- Total	481km
Number of Bridges	104



Advertising by Council

Newspaper

Council generally advertises in The Advocate newspaper (local paper). A profile of what is happening in the Kentish Municipality can be found in Tuesday's Advocate newspaper in the Coast to Coast section.

Council also advertises in the local monthly publication 'The Kentish Voice'.

Notice Boards

Notice boards advising of both Council and community activities are located:

- at the Sheffield Post Office, Main Street, Sheffield
- within the Service Tasmania Shop, High Street, Sheffield
- within the Kentish Council Office, High Street, Sheffield

Council also displays some notices in shop windows in Railton and Wilmot.

Website and Facebook

Council operates its own website - www.kentish.tas.gov.au- and also has a Facebook Page – 'Kentish Council'.

Asbestos Removal

WorkSafe Tasmania is the regulatory authority in relation to asbestos removal. For information on the requirements for asbestos removal contact:

WorkSafe Tasmania
PO Box 56
ROSNY PARK TAS 7018

Phone: 1300 366 322 (within Tasmania)
Local rate: (03) 6166 4600 (outside Tasmania)
Email: wstinfo@justice.tas.gov.au
Web: www.worksafe.tas.gov.au

For a fee, the Waste Transfer Station at Spreyton accepts small amounts of asbestos material that have been securely double wrapped. Please contact Devonport City Council Staff on 6427 3351.

Accredited contractors can take large quantities of asbestos directly to the Dulverton Regional Waste Facility.

Additional information about asbestos can be downloaded from the Department of Health and Human Services website www.dhhs.tas.gov.au/home

Banking

Two banks operate in Sheffield – Westpac, inside the Newsagency on Main Street and Commonwealth, also on Main Street. Both banks have ATMs located outside.

Within all townships (Sheffield, Railton and Wilmot) EFTPOS facilities are available from local businesses.

Banking services with the Sheffield and Railton Community Bank are available prior to the branch opening. Call Sammi Charles on 0409 934 230. Deposits and withdrawals with Bendigo card accounts can be processed at the Sheffield Post Office.

Building

Building permits need to be obtained for demolitions, alterations, additions, change of use and all new buildings including certain fences and swimming pools. Before commencing any building projects, it is advisable to contact Council's Building Department to find out just what is required of you.

It is important to note that planning approval will need to be obtained before most building plans can proceed. When preparing to submit a building application, it is recommended that an appointment initially be made with Council's Planning Support Officer (phone 6491 0200).

Whilst staff are generally available from 8:30am to 4:30pm, it is recommended that an appointment be made to avoid lengthy delays at the counter.

Please refer to page 19 for information regarding Planning/Development Permits.

Business Development

For information about business development opportunities and Council's economic development strategy, please contact Council's Economic Development Officer Chris Frankcombe on 6491 0200.

For assistance with business planning, Cradle Coast Innovation provides government-funded free assistance. Contact CCI on 0488 333 893 or email admin@cradlecoastinnovation.com.au. For small business training programs contact Business and Employment (Devonport) on 6420 7777.

Business and Employment also conduct business networking sessions in Kentish from time to time. For further information regarding these sessions contact Business and Employment on 6420 7777.

Camping and Caravaning

Commercial Camp Grounds

Two commercial campgrounds are available with powered and unpowered sites for tents, caravans and motorhomes. Facilities include shared bathroom amenities, camp kitchens, plus a range of backpacker and self-contained accommodation units:

- Gowrie Park Wilderness Village: 1447 Claude Road, Gowrie Park, Ph: (03) 6491 1385 www.gowriepark.com.au
- Discovery Holiday Parks Cradle: 3832 Cradle Mountain Rd, Cradle Mountain Ph: (03) 6492 1289 www.discoveryholidayparks.com.au/tas/cradle_mountain

Free Camping

Bush camping for tents, caravans and motorhomes free of charge at two sites on the shores of Lake Barrington. Facilities include basic toilet, picnic table, BBQ, shelter, boat ramp. Recommend you bring own water. West side: Lake Barrington Rd, Wilmot; east side: West Kentish Rd, West Kentish. Maximum stay 21 days. The Railton Hotel, Foster Street, Railton allows free camping in its car park.

Self-Contained Motorhomes

Motorhomes with an on-board toilet and shower can stay up to 96 hours in the free RV pullover areas at the Sheffield Recreation Ground in Sheffield, and The Esplanade at Railton. Self-contained vehicles can also stay at the low-cost camping site at O'Neills Creek Reserve, Gowrie Park \$5 per night. Facilities include BBQ, shelter, picnic table, water tap.

Dump point

Blackwater dump points are available at the Sheffield Recreation Ground, Spring Street, Sheffield and at Railway Park, The Esplanade, Railton.

Cemeteries

A limited number of plots are available for reservation at the Sheffield Cemetery. Plots are available at the Wilmot Cemetery and niches are available within the columbarium (ashes wall) however applicants must be able to demonstrate a link with the Wilmot Community. Please contact Council on 6491 0200 for further information.

There are a number of cemeteries located throughout the Kentish Municipality including; Barrington General Cemetery, Claude Road General Cemetery, Cradle Mountain Cemetery (one grave only), Lorinna General Cemetery, Railton Anglican Church Cemetery, Railton General Cemetery, Railton Roman Catholic Cemetery, Railton Uniting Church Cemetery, Sheffield General Cemetery and Wilmot General Cemetery.

Council keeps records for the Sheffield, Railton and Wilmot Cemeteries. Records for all other cemeteries are held by the respective religious organisations with the exception of the Claude Road Cemetery, which is overseen by the Claude Road Cemetery Committee.

Children's Services

Child Care

The Kentish Child Care Centre provides scheduled and casual childcare services. The centre is located at 7 Henry Street, Sheffield and open Monday to Friday from 7.45 am – 5.30 pm. The centre caters for children from birth to 12 years. For further information telephone 6491 1025.

"In home" childcare is provided by members of Mersey Leven Child Care Services. Enquiries should be directed to Mersey Leven Child Care Services on 6491 1025.

Community Grants

Council provides two types of Community Grant Programs:

1. Small Grants Program (up to \$500); and
2. Large Grants Program (from \$500 to \$2,500)

Small grants may be applied for at any time of the year. Applications may be submitted in writing without the need of an application form however, some specific information is required. Please contact Council's Community Development Team for further information.

The Large Grants program is run twice a year in March and September. Applications must be submitted on Council's application form. Forms are available from the Council Office and website during the grant periods.

Community Organisations & Sports Clubs

The community is well served by a number of active Community Organisations and Sports Clubs. For a full listing please refer to the Kentish Local Services and Community Directory which is available from the Council Office and website www.kentish.tas.gov.au

Council Meetings

The Council conducts its ordinary meetings the third Tuesday of each month usually at the Kentish Council Office, 69 High Street, Sheffield commencing at 7pm.. The dates are occasionally varied to avoid public holidays and religious festivals.

Meetings are open to the public, although the conduct of some types of business (prescribed in *the Local Government Act 1993*) does occur in closed session. The Council welcomes and encourages the public to attend its meetings.

At each Ordinary Meeting, up to 15 minutes is set-aside shortly after commencement to enable members of the public to ask questions of Council or to make public statements on matters relevant to Council business.

Agendas for Ordinary Meetings are normally available at the Council Offices the Thursday before each meeting or online at www.kentish.tas.gov.au. Copies are also available on the night of the meeting.

Council Office

The Council office is situated at 69 High Street, Sheffield. Council's postal address is PO Box 63, SHEFFIELD TAS 7306. Opening hours are from 8.00am until 4.30pm. An office telephone service is provided until 4.30pm, phone 6491 0200. Council's facsimile number is 6491 1659 and email address is council@kentish.tas.gov.au.

Further information on Council and the Kentish Municipality is available on our website at www.kentish.tas.gov.au or our Facebook Page.

For after hours assistance/emergencies please call 6491 0200. Your call will be directed to Council's call centre.

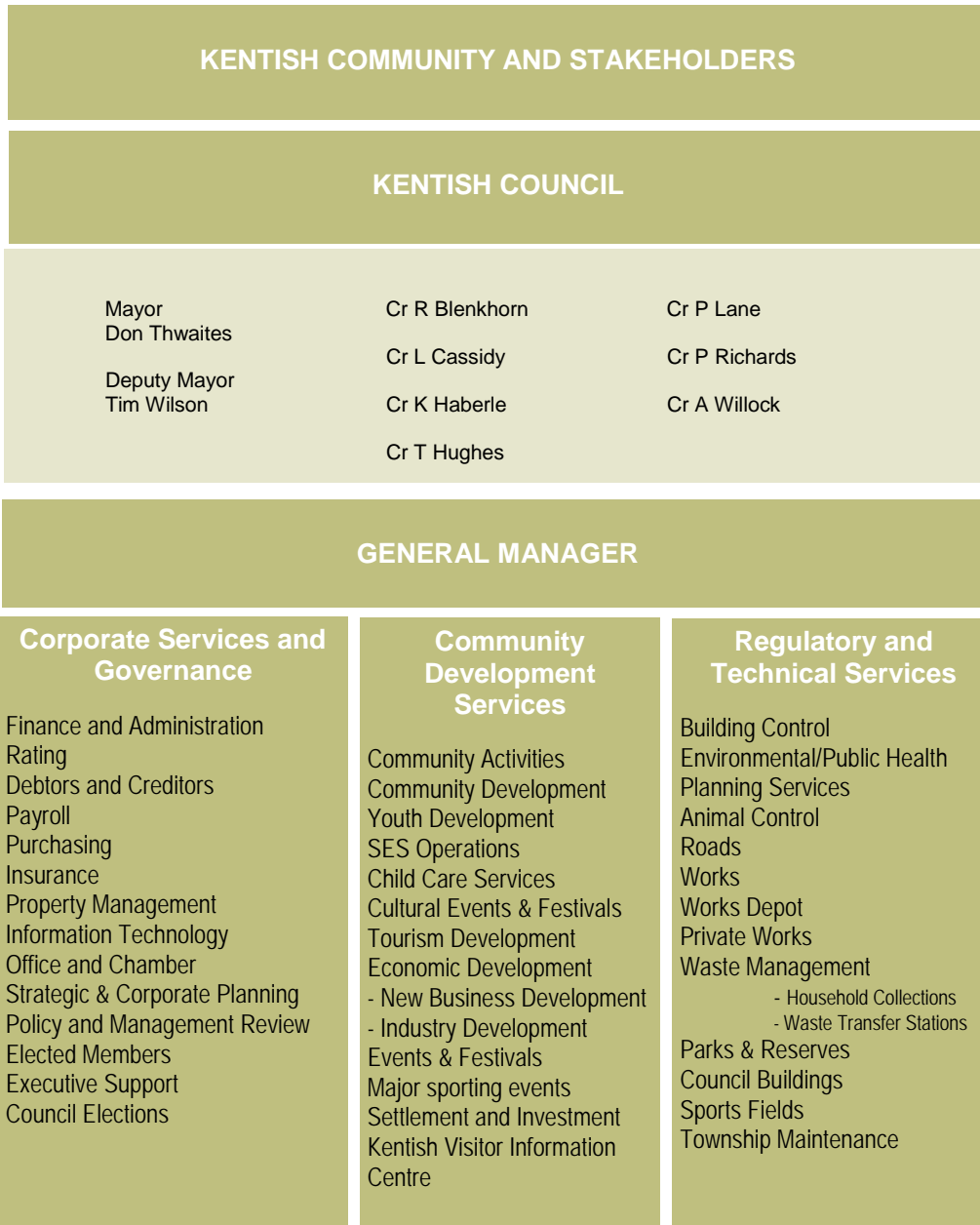
Council Structure

Council has nine elected members. Each Councillor is elected for a four year term and all councillors will retire and become eligible for re-election at the same time.

The Councillors role is to direct and control the affairs of Council according to the *Local Government Act 1993* and other relevant legislation. Councillors are required to represent the interests of residents and ratepayers, provide leadership and guidance to the community and encourage communication between Council and the community.

The General Manager is the Chief Executive Officer of the Council and is responsible for implementing the decisions of Council, day-to-day management, exercising any functions delegated by Council, appointing, directing and managing staff and implementing Council's Strategic Plan.

COUNCIL STRUCTURE



Driveway and Vehicle Crossovers

Vehicle crossovers and driveways within the road reservation are the responsibility of the property owner, not Council. However, any upgrade must be authorised by Council. Construction of crossovers/driveways must be carried out by appropriately qualified persons.

Education

A number of education facilities operate within the Kentish Municipality.

Primary School (Kindergarten – Grade 6)	Sheffield School	6491 8222
	Railton Primary School	6496 1225
	Wilmot Primary School	6492 1421
Secondary School (Grade 7 - 10)	Sheffield School	6491 8222

Additionally, the following opportunities exist for students from Kentish:

Latrobe Primary School	Lewis Street, Latrobe	Grade K - 6
Latrobe High School	Percival Street, Latrobe	Grade 7 -10
St Brendan Shaw College	James Street, Devonport	Grade 7 -12
The Don College	Watkinson Street, Devonport	Grade 11 - 12
Devonport TAFE	Valley Road, Devonport	Pre-vocational
University of Tasmania	Campuses at Burnie, Launceston and Hobart	

The education facilities are easily accessed through an established bus service departing from Sheffield. For further information regarding the bus service please contact the respective education institution.

Other education opportunities for Kentish residents include:

Sheffield Library	Henry Street, Sheffield	6491 1533
Sheffield Online Access Centre	Henry Street, Sheffield	6491 1533
Wilmot Online Access Centre	Main Road, Wilmot	6492 1270

Elderly Persons Units

Within Kentish there are two different organisations which provide elderly persons units:

Tandara Lodge Community Care Inc.

Tandara Lodge has 40 units in Sheffield and 4 Units in Railton. There is no bond required, only a fortnightly payment. Tandara are responsible for the maintenance of the lawns and buildings. For further information contact Tandara Lodge on 6491 1277.

Tandara also has 45 beds in their Aged Care Facility (3 respite care). The Aged Care Facility offers daily exercise, meals, medication and all aspects of care from trained nurses.

Sheffield RSL Units

The Sheffield RSL has 5 units in Sheffield. Bond is required with a weekly rent. The RSL is responsible for the maintenance of lawns and buildings. For further information telephone 6491 1536 or 6491 1257.

Allocation of all units is based on eligibility and the order in which applications are received.

Emergency Information

Emergencies may not be something we think about every day, but they can strike at any time and disrupt lives in many different ways.

For life threatening emergencies call 000.

For emergency help in floods and storms call the SES on 132 500. The SES website has important information that you may find of interest www.ses.tas.gov.au.

The Tas Fire website also has important information that you may find interesting, with topics covering bushfire survival plans and checklists www.fire.tas.gov.au.

These plans include:

[Bushfire Survival Plan booklet](#)

[Leave Early Checklist](#)

[Stay and Defend Checklist](#)

[Emergency Kits](#)

The DVD '*Bushfire - Prepare to Survive 2010-15*', an essential guide to preparing yourself and your property for bushfires, can be obtained from the Council office or posted to you upon request. During times of emergency such as bushfires and extreme weather events, your landline or mobile phone may now be used to deliver a critical warning. Learn more about this system at www.emergencyalert.gov.au

The following link to the Red Cross website has been designed to help people better prepare, respond to and recover from emergencies www.redcross.org.au/emergency-resources.aspx.

The *Australian Food and Grocery Sector* has also developed the following document in relation to 'Preparing for an emergency' <http://www.afgc.org.au/download/1611/>.

Following an emergency eg flood, fire, wind storms etc Council can be contacted for information and referral to support systems Phone 6491 0200.

Ambulance	Emergency only	000
Council	Emergency only after hours	6491 0200
Domestic Violence Crisis Service		1800 737 732
Drug and Alcohol Service	81a Gunn Street, Devonport	6421 7761
Electricity	Emergencies and difficulties	132 004
Fire Brigade	Emergency only	000
	A number of volunteer rural brigades operate throughout the municipality – refer to local services directory	
Kentish State Emergency Service	Albert Street, Sheffield	0417 551 090 0417 551 701
Lifeline	Counselling Service (24 hours)	131 114
Mersey Community Hospital	Torquay Road, Latrobe	6426 5111
Poisons Information		131 126
Police	Emergency only	000
	Sheffield Police Station	6491 1240
	Railton Police Station	6496 1110
Stormwater and Road	Kentish Council	6491 0200
Sewerage and Water	Tas Water	136 992
Telstra		132 200
Youth Shelter	176 William Street, Devonport	6424 7375

Environment

Burning Off

In the interest of reducing pollution loads and possible effects upon neighbours, Council does not encourage the burning of accumulated growth and stockpiled cleared material, particularly in Rural Residential and Closed Residential areas. Waste material, especially from land clearing, should ideally be taken to a Waste Transfer Station, not burnt.

People wishing to burn materials need to be aware of some obvious “dos” and “don’ts”, including:

- It is illegal to burn off on blocks under 2,000m²
- There is a need to gain appropriate Tasmanian Fire Service permits where applicable
- Do not burn green material, plastics or other prohibited material
- Avoid burning on hot, dry or windy days when the weather conditions are likely to cause smoke, ash, cinders or odour to impact on others or cause fires to spread
- Do not burn large amounts (large “stock” piles of more than one m³) of material at any one time

- Have the means to put out a fire available to you
- Appropriately supervise and control any burning material
- Advise neighbours

Smokey, smoldering fires, in or adjacent to residences, are not appreciated by anyone and may cause unexpected outcomes including triggering respiratory complaints.

Residents are reminded that although burning off is permitted outside the annual fire danger period on large blocks of land, there are penalties that can be applied under the *Environmental Management and Pollution Control Act 1994* and *Environmental Management and Pollution Control (Distributed Atmospheric Emissions) Regulations 2007* should negative consequences be experienced from any burning activity. In addition, the Tasmanian Fire Service administers a range of issues relating to fire control and can impose severe penalties for breaches. For further information on “dos” and “don’ts” with respect to fire, please contact the Tasmanian Fire Service on 1800 000 699.

Complaints regarding any burn off activities should be directed to Council’s Environmental Health Officer on 6491 0200 in the first instance and also the Tasmanian Fire Service.

Back Yard Incinerators

The use of back yard incinerators, especially in residential areas to burn unwanted waste, is no longer a socially acceptable practice.

Paper, cardboard, plastic and other materials can be legally disposed of in a number of ways, including recycling. The burning of these and similar materials can cause smoke and odour pollution which could lead to an infringement notice carrying a fine.

Fence Construction

Prior to the construction of a new boundary fence onto road reservations, please consult Council’s Regulatory Services staff as certain regulations on fencing may apply.

Footpaths

Council footpaths are inspected annually and a program established to rectify the most utilised paths with the greatest hazard to users.

For enquiries about works within road reservation contact Council Engineering Department.

Garbage Collection Service

Council has a mobile garbage bin service in operation with Veolia Environmental Services appointed as contractors. All property owners on the garbage collection route should have the prescribed green garbage bin. Requests to obtain a new garbage bin or report lost or damaged bins should be directed to the Council Office. Garbage collection is as follows:

Barrington, Lower Barrington, Nook & Sheffield – Collection (every Friday)

Acacia Hills, Railton, South Spreyton – Collection (every Wednesday)

A map may be obtained from Council's website indicating collection areas.

Health

Aged Care	Tandara Lodge Community Care 10 Nightingale Avenue, Sheffield	6491 1277
Centrelink	William Street, Devonport	131 021
Child Health	Child Health Clinic 1 Henry Street, Sheffield	0400 269 810
Community Nursing	Tandara Lodge Community Care 10 Nightingale Avenue, Sheffield	6491 1277
Community Transport	Mersey Community Care Devonport (3 – 7 days booking notice)	6424 8883
	Tandara Community Bus Sheffield (refer to community directory for schedule)	6491 2740
Dentist	Kentish Health Centre 1 Henry Street, Sheffield	1300 880 024
Department of Veterans Affairs		1800 555 254
Doctors Surgery	Sheffield Medical Centre 1 Henry Street, Sheffield	6491 1166
Health Centre	Kentish Health Centre 1B Henry Street, Sheffield	6491 2740
Meals on Wheels	Sheffield Railton	0467 378 065 6496 1220
Parenting Line		1300 808 178
Respite Care	Tandara Lodge Community Care 10 Nightingale Avenue, Sheffield	6491 1277
Senior Citizens Clubs	Kentish Senior Citizens Club	6496 1289
Suicide Prevention	Kentish Regional Clinic (CORES) 66 High Street, Sheffield	6491 1552
	Parakaleo Patawalonga Road, Claude Road	1300 132 098

Immunisation

Vaccinations are provided in accordance with the National Health and Medical Research Council's, National Immunisation Program.

Regular immunisation can be arranged by appointment at your own doctor's surgery or the Sheffield Medical Centre, 1 Henry Street, Sheffield on 6491 1166.

Council conducts school immunisations in line with the program approved by the Tasmanian Department of Health and Human Services.

Vaccination for the following diseases will be available to eligible students:- Human Papilloma Virus (*HPV*), Diphtheria, Tetanus, Pertussis (*dTpa*) and Varicella. The current schedule proposes all school vaccinations will be given in grade 7.

Further details can be obtained from Council's Environmental Health Officer.

Justices of the Peace

A list of Justices of the Peace residing in the municipality can be found in the Kentish Local Services and Community Directory. This publication is available from the Council Office or website www.kentish.tas.gov.au

Normally there is a Justice of the Peace available at the Service Tasmania Shop in Sheffield, but on occasions this may not be the case.

Museum

The Kentish Museum operates Monday to Friday from 10am until 3pm (weekends by appointment). The Museum is located at 93 Main Street, Sheffield. Entry is via a small donation. The Museum also offers a Family History Service. Contact Barbara Wells on 6491 1861 for further information.

The Wilmot Museum, located on Main Road, Wilmot operates every Saturday and Sunday from 10am till 2pm. Entry is via a small donation. Contact George Richards on 6492 1441 for further information.

Parking

Kerbside parking is free throughout the entire municipality with parking bays line marked in the urban centres of Sheffield and Railton.

There is a free Council car park provided at the rear of the Chemist and The Don Store Supermarket in High Street also to the east of the RSL in Main Street, Sheffield.

Although there are no parking meters, be aware that significant on the spot fines will be issued to residents and visitors that park on any yellow lines, in invalid/disabled parking zones, within loading zones or park longer than the permitted time.

Parks and Reserves

The Kentish Municipality has many attractive parks, playgrounds, picnic areas and barbecue sites. Reserves and playgrounds include –

Sheffield – King George V Park, Mural Park and Kentish Health Care Centre Park

Railton – Lions Park and Goliath Park

Wilmot – Wilmot Hall and Lake Barrington Park

Lake Barrington at West Kentish – West Kentish Park

Further information is available from the Kentish Visitor Information Centre on 6491 1179.

Pets

CATS

From 1 July 2012, new legislation relating to owning, breeding and controlling cats came into effect in Tasmania. Domestic cats are a part of many households and are a valued companion to many people. The Tasmanian Government promotes responsible pet ownership and the [Cat Management Act 2009](#) encourages owners to have their pets desexed and microchipped. Compulsory desexing and microchipping will be phased in.

Under the Act only registered breeders are permitted to breed cats. Cats sold or given away must be more than eight weeks old, desexed and microchipped. The Act also introduces powers to trap, seize or destroy stray and feral cats in certain circumstances and gives land owners and managers the statutory power to control cats found on their land.

Over many years, a feral cat population has become established in Tasmania. DPIPWE is responsible for coordinating efforts to better understand and reduce these impacts. A statewide plan is being developed to support these efforts. As part of this, the Invasive Species Branch (ISB) is consulting with key industry and community groups.

DOG REGISTRATION

In accordance with the Dog Control Act 2000, all dogs over the age of 6 months are required to be registered with the local Council in whose municipality they live. Dog registrations are valid from 1 July to 30th June each year.

DOG MICROCHIPPING

From July 2011, all dogs must be micro-chipped. This micro-chip number is a vital requirement on the Council's Dog Register as well as the National Databases. If you haven't already done so please provide Council with your dog's micro-chip number.

OFF-THE-LEAD DOG EXERCISE AREAS

The *Dog Control Act 2000* provides for a Council to set aside areas for the exercising of dogs, subject to specific conditions. All dogs enjoy the freedom of running around without a leash. Kentish Council has established special areas at Sheffield and Railton to give your dog the chance to run around leash-free without fear of attracting a fine, provided it is still under effective control. Off-the-lead dog exercise areas are located at Railton Railway Park, Kentish Park, Wilmot Park and Gowrie Park Reserve (adjacent to Rodeo Ground). There is a fenced off-lead area at the Sheffield Recreation Reserve.

AREAS WHERE DOGS ARE REQUIRED TO BE ON LEADS

As declared under the Dog Control Act 2000, all road and road related areas in built up areas within the Kentish Council boundaries are areas where dogs must be on leads at all times. There are some areas of bushland reserves where dog walking is acceptable but only using established tracks and trails with dogs remaining on leads to prevent them from straying into sensitive bushland habitat. In addition, the following areas have been declared as areas where dogs must be on a lead at all times: All Council parks and recreation reserves, except those designated as off lead areas.

DOG RESTRICTED AREAS

The Dog Control Act 2000 prohibits dogs in any:

- grounds of a school, pre-school, kindergarten, crèche or any other place for the reception of children without the permission of a person in charge of the place
- shopping centre or shop
- playing area of a sportsground on which sport is being played
- area within ten metres of a children's playground

BANNED AREAS:

In accordance with the Act, the following areas are declared out of bounds to dogs: King George V Park Sheffield, Goliath Park Railton, Railton Recreation Reserve, Sheffield Recreation Reserve (except where otherwise permitted), Wilmot Recreation Reserve, Park at Wilmot Hall.

TRAINING AREAS

There is a fenced off-lead dog park at the Sheffield Recreation Ground.

Planning Permits

All development and use of land within the Kentish Municipality is governed by a planning scheme. Should you wish to establish a new development (even if building approval is not required), you may need planning approval. Types of new development include construction of accesses, land clearing, any site works, home-based business, commercial and industrial activity, signage and the like should be discussed with Council's Planning staff.

Please refer to page 6 for information regarding Building Permits.

Plumbing Permits

Plumbing permits including septic systems must be obtained before work commences on any project. To obtain a permit, plans should be submitted to the Council showing the relevant details of the proposed works. Household drainage plans can be obtained by contacting Council's Building staff during normal business hours.

Postal Services

There are three postal service facilities located within the Kentish Municipality:

- Railton Licensed Post Office, 2 Foster Street, Railton
- Sheffield Post Office, 58 Main Street, Sheffield
- Wilmot Country Store, 64 Main Road, Wilmot

Rates

Rate notices are issued early in each financial year. Ratepayers have the choice to elect to pay by one lump sum upon receipt of the notice (discount applies if paid in full on or before the first instalment due date) or by four instalments.

Where ratepayers are unable to pay in full or by four instalments, other payment arrangements are available such as direct debits or alternatively signing an application to extend payment of rates.

Pensioner Rate Remission

Individuals may be eligible for a pension remission on their property if they are able to meet the criteria set by the Department of Treasury and Finance.

First, the applicant must be liable to pay the rates on the property which they occupy as their principle place of residence as of 1 July of the financial year to which the rates relate. Second, the applicant must hold one of three types of cards issued by Centrelink or the Department of Veterans' Affairs. The card must be valid on or prior to 1 July of the financial year to which the rates rebate relates.

Recycling Service

A domestic kerbside recycling collection service is available to those residences that receive a household garbage collection. Each residence is issued with a yellow-lidded recycling wheelie bin. The service operates on a fortnightly basis.

Recyclable materials include plastics with the symbol 1,2,3,4,5,6, newspapers, magazines/junk mail/cardboard/office papers, glass, milk and juice cartons, steel and aluminum cans. Please rinse all containers and remove ALL lids. Do not bundle paper and cardboard.

Non-recyclable materials which should NOT be placed in bins includes plastic bags, window glass or mirrors, batteries, light globes, polystyrene foam, crockery, household rubbish, food items,

household chemicals or oils and nappies.

Council has three recycling drop off points within the municipality:

- Sheffield Transfer Station is located at East Victoria Street, Sheffield,
- Railton Recycling is located at Giblin Street, Railton,
- Wilmot Transfer Station is located at Lake Barrington road, Wilmot.

Recyclables can be disposed free-of-charge at these locations. The Hub, located at 35 High Street, Sheffield, will accept some recyclables.

Waste engine oil is accepted free-of-charge at either the Sheffield Waste Transfer Station or Wilmot Waste Transfer Station.

E-waste (electronic waste such as computers, televisions etc) is accepted at Sheffield Waste Transfer Station.

DrumMUSTER collection of clean chemical containers is available by appointment at Spreyton Waste Transfer Station, Mersey Road, Spreyton ph 6427 3351.

Road Reservation Works

The day to day maintenance of the nature strip is the responsibility of the property owner to manage including desired appearance, re-shaping and grassing without creating any hazards to the public.

All other works, including any variation to driveway width or excavations within the road reservation are subject to separate Council approval.

Sharps Disposal Service

Council provides a free service for the proper disposal of sharps containers for diabetics, home care patients or any resident who requires this service within the Kentish Municipality. Full sharps containers may be disposed of at the sharps disposal bin located between Service Tasmania and the Town Hall in High Street, Sheffield. If your container does not fit down the chute, it can be taken to the Council Office during business hours and exchanged for a new container.

Sharps containers (1.4 Litre) are available from the Council Office, free-of-charge during office hours. For further information contact Council's Environmental Health Officer.

Under no circumstances is "sharps" type waste to be taken to the Waste Transfer Station or disposed of in the domestic refuse collection service.

Sport and Recreation

Many sports are played in the Kentish Municipality and there are a large number of recreation clubs operating within the area.

Facilities range from tennis courts, bowls clubs, youth centre, golf club, skateboard park, football and cricket grounds to small parks with play structures to larger parks with additional features such as barbecues and toilets.

King George V Park at High Street, Sheffield, is the location of the Municipality's only skate park. Public toilets and children's play equipment are also located in the park.

Goliath Park at Crocker Street, Railton, is the municipality's largest recreational park and includes a BMX Park, public toilets, basketball courts, tennis courts and children's play equipment.

The Green Room (Sheffield Youth Centre) is located in High Street, Sheffield. Activities include; eightball, playstation 3, computers and free internet, music, games and youth health information. Children must be over the age of 10 to attend the Green Room.

There are three **Recreation Grounds** within Kentish located at Sheffield, Railton and Wilmot. These grounds are operated by a Committee for football, cricket etc. Grounds can be hired. Bookings can be made by contacting the appropriate Committee. Users are required to complete an Application-for-Use form. Please refer to the Kentish Local Services and Community Directory for contact information.

Lake Barrington can be accessed from West Kentish and Wilmot. The lake provides a range of aquatic activities such as rowing, canoeing, power boating, skiing, fishing and swimming (you must provide your own equipment for these activities).

Stormwater

Any new connection to Council's stormwater system is to be undertaken by Council or an approved contractor at the developers cost.

New connections to the town sewer or water system are supplied by *Tas Water* who are contactable by phoning 13 69 92.

Transport

Air

Devonport Airport is serviced by Qantaslink airlines 13 1313
Tasair provides daily passenger and freight services from Devonport Airport 6427 9777

Road

Please note there is no scheduled public transport bus system in Kentish. Some private operators do provide transport.

Mersey Community Care provides a scheduled service for HACC eligible passengers.

Tandara Lodge Community Care Inc operates a bus services from Sheffield to Devonport via Railton and Wilmot to Devonport via Ulverstone. 6491 1277

Private bus contractors are available for hire.

Taxis are based in the neighbouring city of Devonport.

Sea

TT Line – Spirit of Tasmania	Passenger Reservations	1800 634 906
	Administration	6421 7311
	Freight reservations	6421 7322

TT-Line operates regular ferries between Devonport and Melbourne (daily) and Devonport. Additional freight sea transport services are provided between Devonport and the mainland by various shipping companies.

Venue Hire

Within the Kentish Municipality there are a variety of venues available for hire by community and private groups.

The Sheffield Town Hall and Supper Room located in High Street, Sheffield, is available for public hire. Please contact the Kentish Council on 6491 0200 to make a booking.

The Kentish Community Rooms, also in High Street, Sheffield, are available for public hire. These rooms are available to local community groups free-of-charge. Please contact the Kentish Council on 6491 0200 to make a booking.

There is also a large range of Community Halls available for hire throughout the municipality. Please refer to the Kentish Local Services and Community Directory for a comprehensive list. A copy of this publication is available from the Council Office or from Council's website www.kentish.tas.gov.au

Visitor Information Centre

Council supports the operation of a Visitor Information Centre within Kentish.

Kentish Visitor Information Centre
5 Pioneer Crescent, SHEFFIELD TAS 7306
Phone: 03 6491 1036
Fax: 03 6491 2466
Email: kvic@kentish.tas.gov.au

Opening Hours (Summer)

Monday - Friday 9.00am - 5.00pm
Saturday - Sunday 10.00am - 4.00pm
Public Holidays 10.00am – 4.00pm

Opening Hours (Winter)

Monday – Friday 9.00 am – 4.00pm
Saturday – Sunday 10.00am – 4.00pm
Closed Christmas Day and Good Friday

The centre has a range of information and brochures regarding local and nearby attractions.

Volunteering

Residents can contact Council's Community Development staff to discuss opportunities for volunteer work in the community. Some of the many opportunities available are listed below.

Youth Supervisor – Become a volunteer supervisor at the Wilmot or Sheffield Youth Centre and help young people achieve their potential. Opening hours are flexible and depend on your availability.

Visitor Information Centre – Help visitors from interstate and overseas to enjoy their time visiting Kentish by becoming a volunteer at the Kentish Visitor Information Centre. The centre is open 7 days a week all year round.

Waste Transfer Station

Waste is collected at either the Sheffield Waste Transfer Station, East Victoria Street, Sheffield, or the Wilmot Waste Transfer Station, Lake Barrington Road, Wilmot, then transported to a disposal site at Dulverton, which is not accessible to the general public. Operating hours for the transfer stations are:

Site hours -

Sheffield	Monday, Wednesday, Saturday and Sunday	12noon - 5.00pm
	Tuesday	Closed
	Thursday and Friday	8.00am – 1.00pm
Wilmot	Wednesday	2.00pm - 5.00pm
	Saturday	9.00am – 12 noon
	Sunday	1.00pm – 3.00pm

Both sites are closed on Good Friday and Christmas Day and may be closed on other Public Holidays. Please check the website for further information.

Council provides free entry to Waste Transfer Stations for Kentish residents and ratepayers. Please deposit recyclables and waste in the designated areas or as directed by the operator.

Hazardous and commercial waste is not accepted at the transfer stations and arrangements should be made to take this waste directly to an approved landfill. Contact details for Dulverton Regional Waste, ph 6424 7344.

Water and Sewerage

Water and sewerage services are provided by TasWater. For any queries or emergencies relating to water or sewerage services telephone 13 69 92.

Weeds

Kentish Council, in conjunction with other organisations, has identified seven weeds of municipal significance for residents and ratepayers to be aware of in managing their own property. These weeds are listed below and residents can contact Council regarding recommended control methods.



Californian Thistle



Spanish Heath



St Johns Wort



Vipers Bugloss



Patterson's Curse



Ragwort



Pampas Grass

There are also weeds of State significance and Weeds of National significance, such as gorse, blackberries and willows. Further information on these weeds may be obtained from the Department of Primary Industries, Parks, Water and Environment on 6421 7654.

Council's weed management policy can be viewed on our website.

http://www.kentish.tas.gov.au/webdata/resources/files/Weeds_Policy_sept2010.pdf

Check List

It's often said that moving house is one of the most stressful things you will ever do. Several important decisions need to be made and there are many things to do. The checklist below will assist you with notifying relevant organisations of your change of address. You may also wish to consider having your mail re-directed for an interim period. Your local post office can assist you with this.

- Australia Post (re-direction of mail)
- Australian Electoral Office (132 326)
- Banks and Financial Institutions
- Clubs and Unions
- Medicare
- Department of Transport – Motor Registry Office
C/- Service Tasmania
- Centrelink
Newstart, Jobsearch, Newstart Allowance Enquiries (132 820)
Pension Enquiries (132 300)
Family Payment Enquiries (131 305)
- Employer
- Insurance Companies
- Newspapers, Subscriptions
- Schools and Technical Colleges

